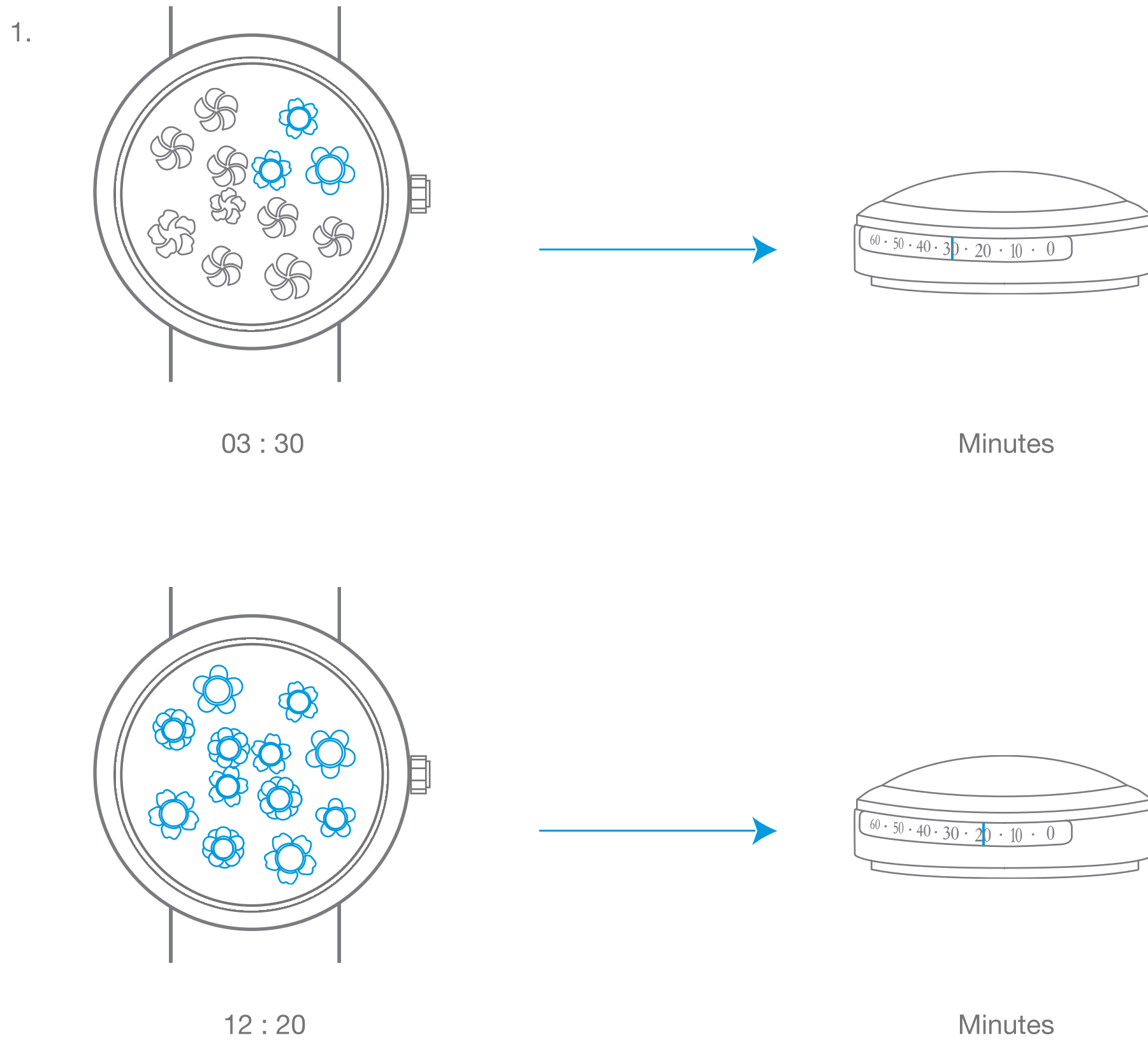


# Van Cleef & Arpels

## Self-winding mechanical movement with a flower-opening module for the hours and lateral minute display

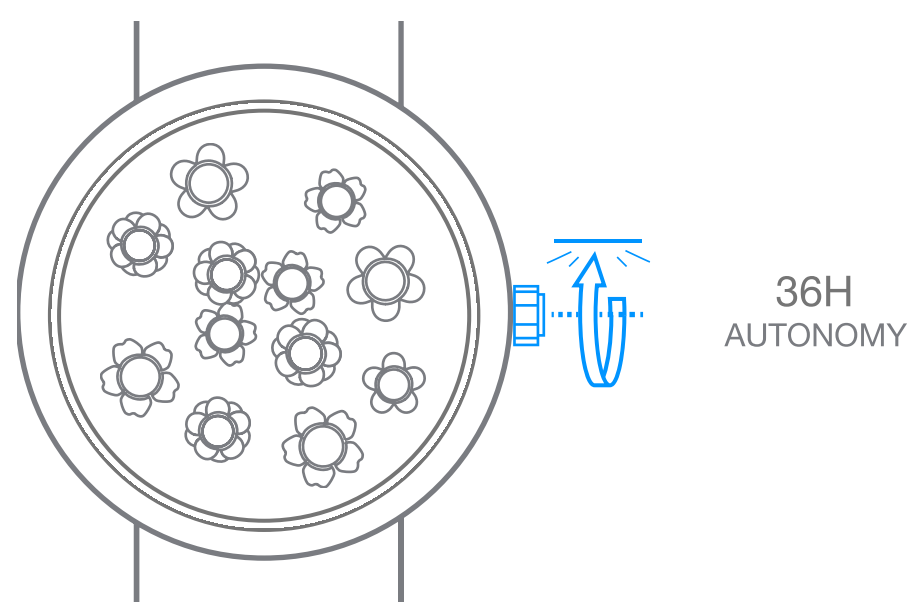
### 1. Read the time

---



### 2. Wind the watch

---

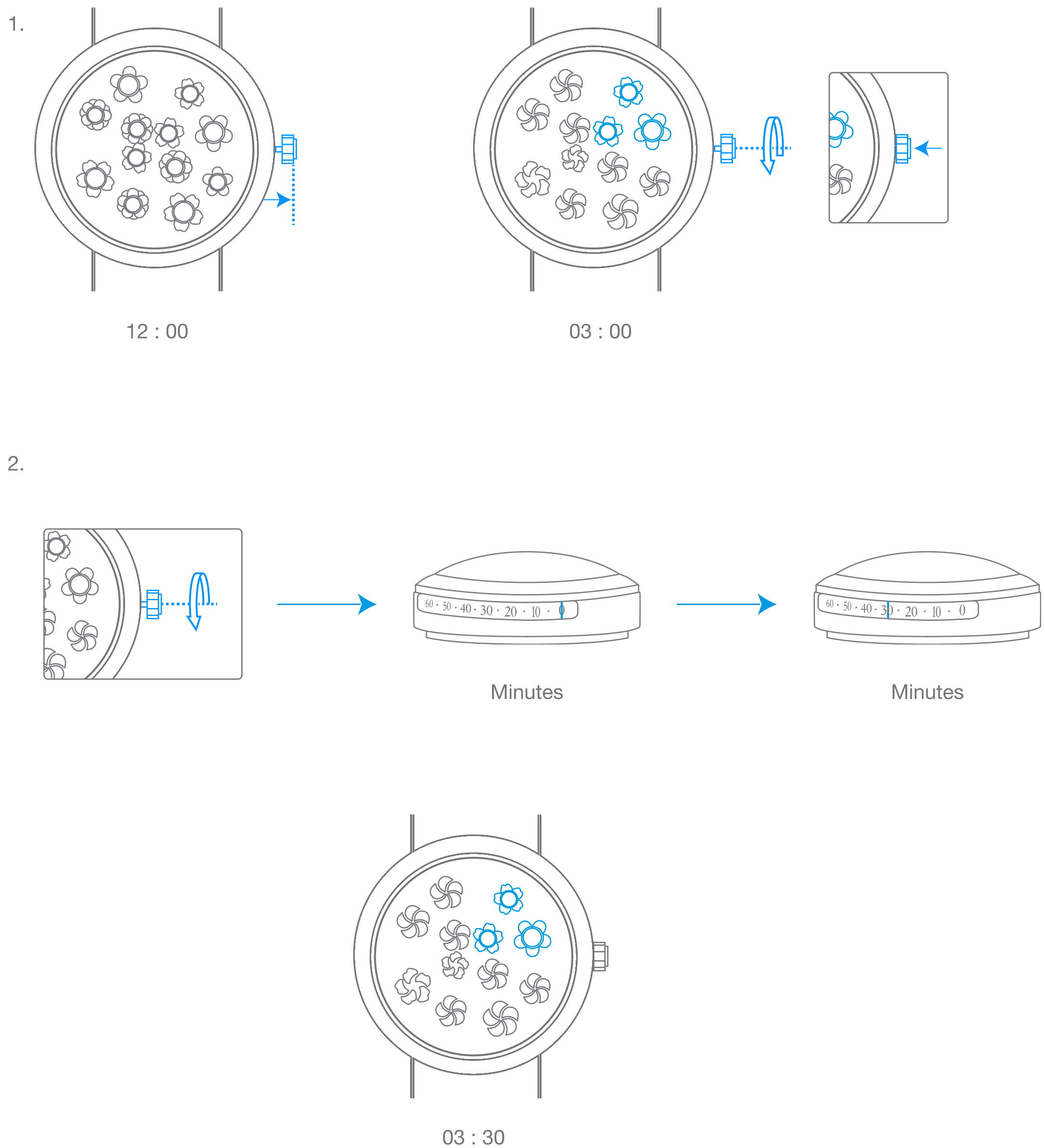


# Van Cleef & Arpels

## Self-winding mechanical movement with a flower-opening module for the hours and lateral minute display

### 3. Set the time

---

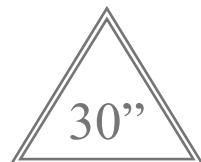


# Van Cleef & Arpels

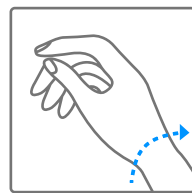
## Pictograms

00h  
AUTONOMY

Your watch's power reserve



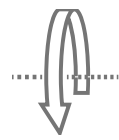
Important note: wait 30 seconds after winding the watch before setting the time



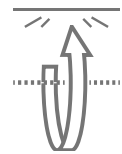
Self-winding through your wrist movement



Turning clockwise



Turning counter-clockwise



Turning clockwise until you meet resistance



Turning counter-clockwise until you meet resistance



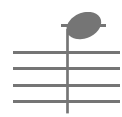
LOCAL TIME

Local time



2<sup>ND</sup> TIME ZONE

Time in selected country



High-pitched sound



Low-pitched sound